

KM Butyl Tape

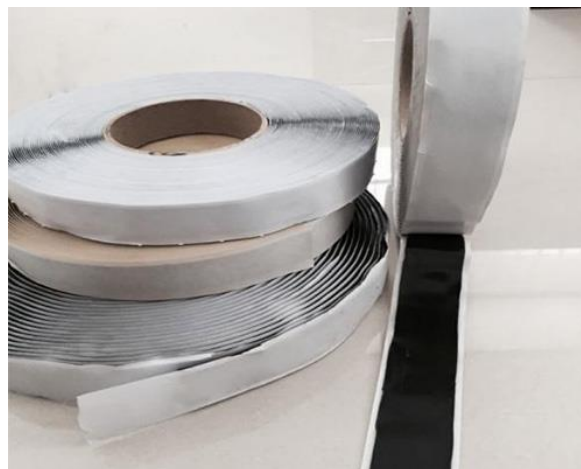
Product Description

KM Butyl Tape is a flexible, double sided adhesive tape. It is made of a special adhesive mainly synthetic rubber to deliver a self-adhesive and permanent bonding properties.

It is durable with resistances in weather, aging and water.

It is mainly used for sealing laps, perimeter or minor joints, chimneys and adhering roof membranes.

Particularly appropriate for sealing KM EDPM membranes to concrete, timber, metalwork and most plastic products.



Benefits

- Flexible – easy to handle and use
- Better adhesion to conventional products
- Water and air tightness
- Durable – does not soften upon heat and water resistant
- Application temperature: -40 to 100 °C



KM 9810 Butyl Tape with Base Cloth

Technical Specification

Physical Properties	KM 9610B	KM 9810	Test Method
Material	Butyl sealant tape	Butyl sealant tape with base cloth	
Color	Black	Black	
Dimensions <ul style="list-style-type: none"> - Thickness (T) - Width (W) - Length (L) 	T 1mm W 50mm L 15M or L40M	T 1mm W 50mm L 15M	
Adhesive force (N/25mm)	60	50	Based on JIS 0237: 2000 180°peel for stainless steel
Shear adhesion (N/cm ²)	55	43	Adhesion test to shear direction
Tensile elongation (%)	200	9	Based on JIS 0237: 2000

~ Please consult our technical services for any enquiries and application concerns.

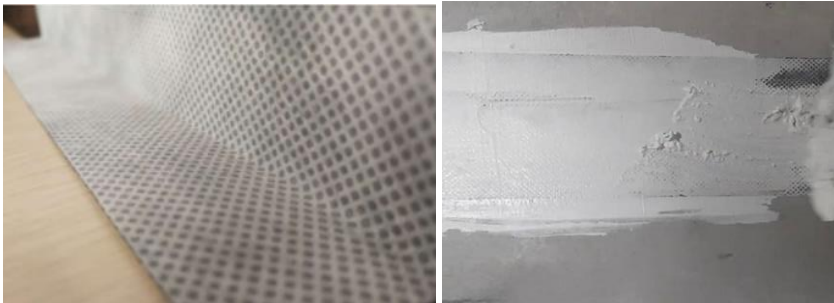
KM Butyl Tape

Application

KM Butyl Tape 9610B



KM Butyl Tape 9810



Use and Storage

- Surface preparation is required. The application should be done on a dry and clean surface (no dust, no grease, no solvent, etc.).
- When putting this tape on the substrate, please press firmly. Within the few hours after pasting, please be careful not to put the tape under heavy pressure.
- Store the KM Butyl Tape rolls in their initial packaging, flat, in a clean and dry place. Storage temperature below +30 °C, away from direct sunlight.

This information corresponds to our current knowledge on the subject. It is not intended to substitute for any testing you may need to conduct to determine for yourself the suitability of our products for any application other than the application as specified herein. This information may be subject to revision as new knowledge and experience becomes available. Since we cannot anticipate all variations in actual end-use conditions, makes no warranties and assumes no liabilities in connection with any use of this information for applications other than the application as specified herein. Nothing in this publication is to be considered as a license to operate under or a recommendation to infringe any patent right. Product safety information is available on request. This data sheet is a printed document and is valid without signature.