

KM MSD-DG DRILLED & COUNTERSUNK JOINT COVER SYSTEM

Material Description

KM MSD-DG Drilled & Countersunk joint cover is designed to provide an attractive and decorative low cost solution to the problem of protecting and concealing expansion joints in the structure of a building.

Choice Material for Exposed Joint Cover in Aluminum Clear Anodized Finish or Stainless Steel 304 or Stainless Steel 316 type or Chequer Plate Finish.

Specially designed for Light or Medium Duty Usage, subject to the material choice.

Fire barrier and vapor barrier can be installed separately in one length upon request.

FLOOR-TO-FLOOR: KM MSD-DG



Key Performance Properties

- All Metal Joint Cover System, engineered and extruded to meet required performance movement.
- KM MSD-DG Joint Cover System allows for Lateral Thermal Movement and Seismic Movement
- Flexible Joint Movement Admissible
- Cost- Effective solution for Retrofit and Surface Mounted Installations, offering Serrated Surface and Beveled Edges for Pedestrian Safety.
- Ideal for Carpet, Vinyl, Ceramic Tile and Other Floor Finishes.
- Suitable for Floor- to- Floor and Floor- to- Wall configuration.

FLOOR-TO-WALL: KM MSD-QDG

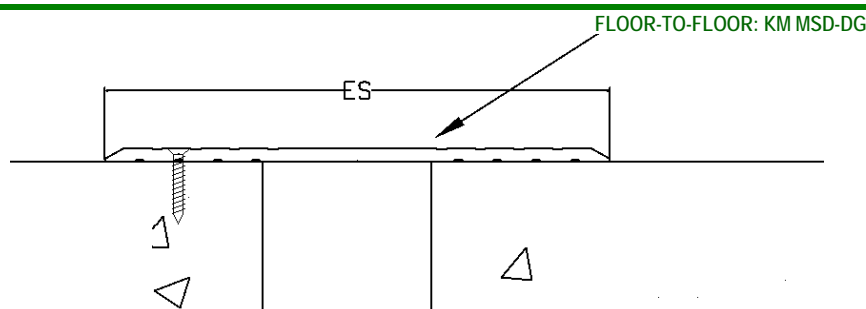


Material Data

- **Exposed Plate Cover**
 - Aluminum 1060 OR Stainless Steel AISI 304 OR Stainless Steel AISI 316 Type.
 - Standard Finishes: Aluminum Mill Finish
- **Vapor Barrier System [Optional]**
 - EDPM Continuous Rubber Membrane



KM MSD-DG DRILLED & COUNTERSUNK JOINT COVER SYSTEM

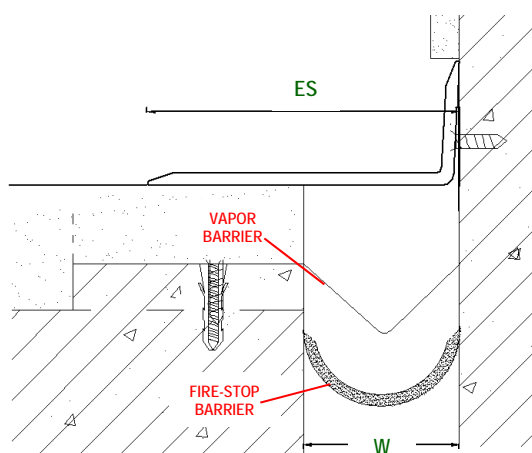


MSD-DG Drilled & Countersunk Joint Cover

- Suitable for Joint Width: 50 - 250mm
- Material Type: Extruded Aluminum ASTM 6063 T5 [Clear Anodized Finish]
- Customized Material Type Available, upon request: Stainless Steel Type 304/ 316; Chequer Plate

Joint Width (W)		50	50	75	100	125	150	200	250
Exposed Surface (ES)		150	200	200	200	250	250	300	350
Movement Capacity [mm]	Total	75	125	125	125	175	175	290	275
	+	25	75	50	25	50	25	25	25
	-	50	50	75	100	125	150	200	250
Width of Plate [mm]		150	150	200	200	250	250	300	300
Thickness of Plate [mm]		4	4	4	4	4	4.5	6	6
Load Capacity [kN]		25	25	20	10	10	10	10	10

FLOOR-TO-WALL: KM MSD-QDG



MSD-QDG Drilled & Countersunk Joint Cover

- Suitable for Joint Width: 50 - 200mm
- Material Type: Extruded Aluminum ASTM 6063 T5 [Clear Anodized Finish]
- Customized Material Type Available, upon request: Stainless Steel Type 304/ 316; Chequer Plate

Joint Width (W)		50	75	100	100
Exposed Surface (ES)		150	200	150	200
Movement Capacity [mm]	Total	125	175	175	175
	+	75	100	25	75
	-	50	75	100	100
Width of Plate [mm]		150	200	150	200
Thickness of Plate [mm]		4	4	4	4
Load Capacity [kN]		25	10	25	10

Packing

- Standard Length of 3-Meters; Customized Length can be arranged, upon request.
- Contact Sales Representative, for Customized or Larger Sizes

Product of Singapore