

KM MSD-G MECHANICAL FLOOR EXPANSION JOINT SYSTEM

Material Description

All Metal Floor Expansion Joint for Exterior and Interior Use. Designed to smoothly blend into any surface type.

Choice Material for Exposed Joint Cover in Aluminum Mill Finish or Stainless Steel 304 or Stainless Steel 316 type.

Specially designed for Heavy Duty usage.

The vapor barrier can be installed separately in one length upon request.

FLOOR-TO-FLOOR: KM MSD-G



Key Performance Properties

- All Metal Mechanical Joint System, engineered and extruded to meet required performance movement.
- Self- Centering Aluminum/ Stainless Steel Joint Cover System allows for Thermal Movement and Seismic Movement
- Joint Movement Admissible up to +100%
- Economical solution for Retrofit and Surface Mounted Installations, offering Serrated Surface and Beveled Edges for Pedestrian Safety.
- Ideal for Carpet, Vinyl, Ceramic Tile and Other Floor Finishes.
- Suitable for Floor- to- Floor and Floor- to- Wall configuration.

FLOOR-TO-WALL: KM MSD-OG



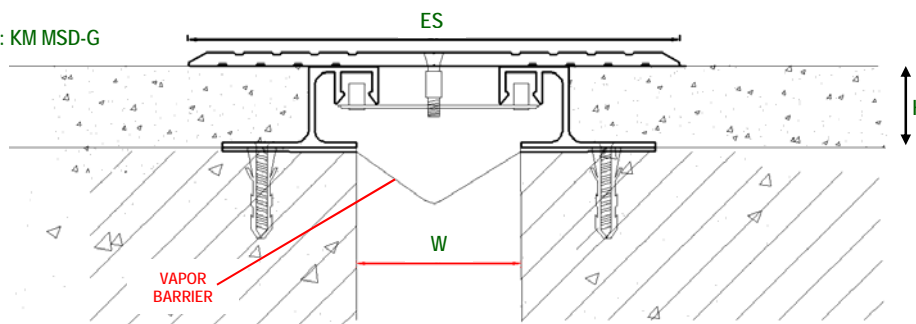
Material Data

- **Extruded Side Frames**
 - All Aluminum ASTM 6063-T5 base on multiple alloys and tempers are used to establish to be the most appropriate for the given use of individual parts.
- **Exposed Plate Cover**
 - Aluminum 1060 OR Stainless Steel AISI 304 OR Stainless Steel AISI 316 Type.
 - Standard Finishes: Aluminum Mill Finish
- **Self- Centering Turn Bar System**
 - Aluminum ASTM 6063-T5
- **Vapor Barrier System [Optional]**
 - EDPM Continuous Rubber Membrane



KM MSD-G MECHANICAL FLOOR EXPANSION JOINT SYSTEM

FLOOR-TO-FLOOR: KM MSD-G



MSD-G Mechanical Floor Expansion Joint System

- Suitable for Joint Width: 50 - 250mm
- Aluminium Profile Plate: Width * Thickness: 150mm * 4mm, 200mm * 4mm, 250mm * 4.5mm, 300mm * 5mm, 300mm*6.3mm
- Aluminium Base (Height*Wall Thickness): 25mm * 2mm, 25mm * 3mm, 40mm * 1.5mm

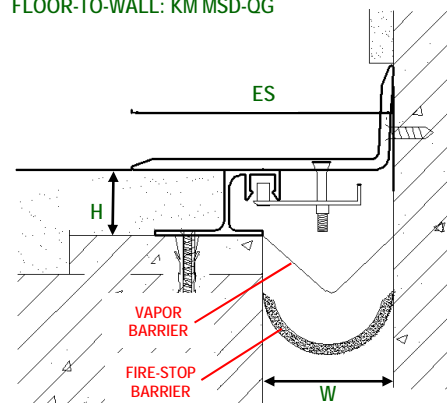
| Joint Width (W) | | 50 | 75 | 100 | 125 | 150 | 200 | 250 |
|---------------------------|-------|-----|-----|-----|-----|-----|-----|-----|
| Exposed Surface (ES) | | 150 | 200 | 200 | 200 | 250 | 300 | 300 |
| Movement Capacity [mm] | Total | 140 | 140 | 185 | 190 | 240 | 290 | 290 |
| | + | 115 | 90 | 110 | 90 | 115 | 115 | 65 |
| | - | 25 | 50 | 75 | 100 | 125 | 175 | 225 |
| Width of Plate [mm] | | 150 | 150 | 200 | 200 | 250 | 300 | 300 |
| Thickness of Plate [mm] | | 4 | 4 | 4 | 4 | 4.5 | 5 | 6.3 |
| Load Capacity [kN] | | 25 | 20 | 10 | 10 | 10 | 10 | 10 |

MSD-QG Aluminium Floor Expansion Joint System

- Suitable for Joint Width: 50-175mm
- Aluminium Profile Plate: Width*Thickness: 150mm*4mm, 200mm*4mm
- Aluminium Base (Height*Wall Thickness): 25mm*2mm, 25mm*3mm

| Joint Width, W | | 50 | 75 | 100 | 125 | 150 | 175 |
|---------------------------|-------|-----|-----|-----|-----|-----|-----|
| Exposed Surface, ES | | 150 | 150 | 150 | 200 | 200 | 200 |
| Movement Capacity [mm] | Total | 125 | 125 | 125 | 125 | 175 | 158 |
| | + | 105 | 80 | 55 | 30 | 55 | 25 |
| | - | 20 | 45 | 70 | 95 | 120 | 123 |
| Width of Plate [mm] | | 150 | 150 | 150 | 200 | 200 | 200 |
| Thickness of Plate [mm] | | 4 | 4 | 4 | 4 | 4 | 4 |
| Load Capacity [kN] | | 25 | 35 | 10 | 10 | 10 | 10 |

FLOOR-TO-WALL: KM MSD-QG



Packing

- Standard Length of 3-Meters; Customized Length can be arranged, upon request.
- Contact Sales Representative, for Customized or Larger Sizes

Product of Singapore