

KM MSN-SK MECHANICAL EXPANSION JOINT SYSTEM FOR VERTICAL & CEILING

Material Description

All Metal Vertical Expansion Joint for Exterior & Interior Wall, and Ceiling.

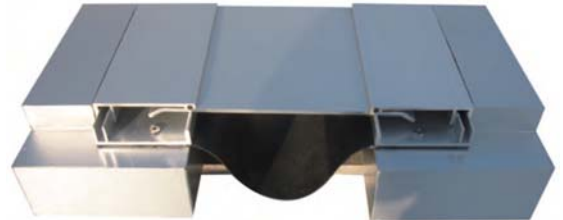
Designed to smoothly blend into any surface type.

Choice Material for Exposed Joint Cover in Standard Aluminum Mill Finish. Anodized, PVDF or Powder-coat to Required RAL Color* is possible.

**Additional cost may be required for required coating.*

The vapor barrier can be installed separately in one length upon request.

WALL-TO-WALL/ CEILING-TO- CEILING:
KM MSN-SK



Key Performance Properties

- All Metal Mechanical Joint System, engineered and extruded to meet required performance movement.
- Featuring a Center Gliding Plate System
- Joint Movement Admissible up to 80mm.
- Recessed frame is designed for drywall installations or can be surfaced mounted.
- Ideal for Different Wall and Ceiling Finishes.
- Unexposed Fixations provides a Neat Beautiful Aesthetic Appearance.
- Better Durability for Interior Fit-Out & Exterior All Weather- Conditions.

WALL-TO- PENDICULAR WALL/
CEILING-TO-WALL
: KM MSN-QSK



Material Data

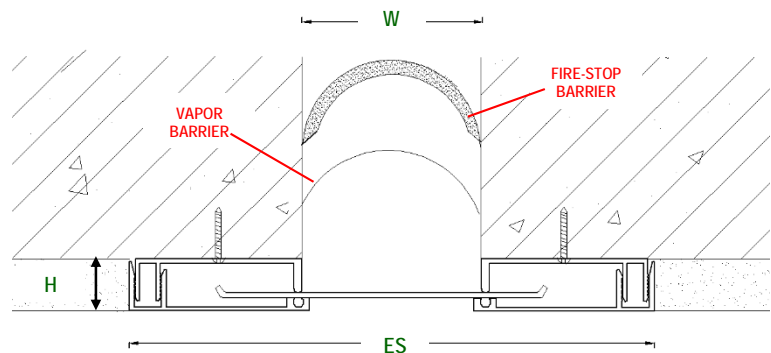
- **Extruded Side Frames & Center Gliding System**
 - All Aluminum ASTM 6063-T5 base on multiple alloys and tempers are used to establish to be the most appropriate for the given use of individual parts.
 - Standard Finishes: Aluminum Mill Finish
- **Vapor Barrier System [Optional]**
 - EDPM Continuous Rubber Membrane



KM MSN-SK MECHANICAL EXPANSION JOINT SYSTEM FOR VERTICAL & CEILING



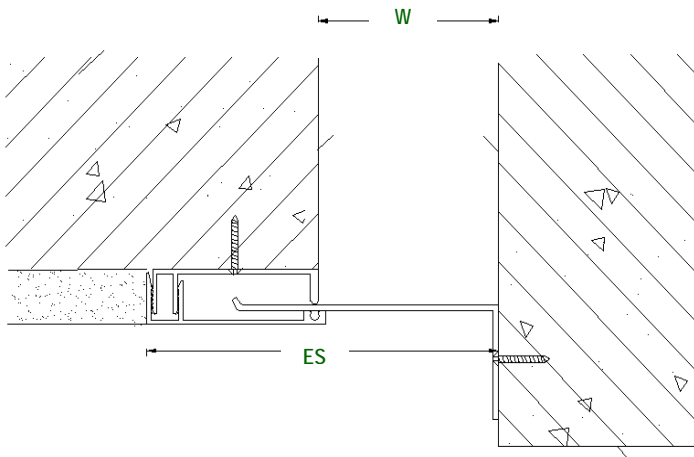
WALL-TO-WALL/ CEILING-TO- CEILING:
KM MSN-SK



MSN-SK Aluminium Vertical Expansion Joint System												
<ul style="list-style-type: none"> Suitable for Joint Width: 75-500mm Aluminium Base Wall Thickness: 1.3mm, 2mm 												
Joint Width, W		75	100	125	150	175	200	250	300	350	400	500
Exposed Surface, ES		170	195	220	245	270	295	345	395	445	495	595
Movement Capacity [mm]	Total	110	110	110	110	110	110	110	110	110	110	110
	+	70	70	70	70	70	70	70	70	70	70	70
	-	40	40	40	40	40	40	40	40	40	40	40
Width of Plate [mm]		115	140	165	190	215	240	290	340	390	440	540
Thickness of Plate [mm]		1.5	1.5	1.5	1.5	1.5	1.5	1.5	1.5	2	2	2

KM MSN-SK MECHANICAL EXPANSION JOINT SYSTEM FOR VERTICAL & CEILING

WALL-TO- PENDICULAR WALL/
CEILING-TO-WALL
: KM MSN-QSK



MSN-QSK Aluminium Vertical Expansion Joint System

- Suitable for Joint width: 75-500mm
- Aluminium Base Wall Thickness: 1.3mm, 2mm

Joint Width (W)		75	100	125	150	175	200	250	300	350	400	450	500
Exposed Surface (ES)		125	150	175	200	225	250	300	350	400	450	500	550
Movement Capacity [mm]	Total	55	55	55	55	55	55	55	55	55	55	55	55
	+	35	35	35	35	35	35	35	35	35	35	35	35
	-	20	20	20	20	20	20	20	20	20	20	20	20
Width of Plate [mm]		95	120	145	170	195	220	270	320	370	420	470	520
Thickness of Plate [mm]		1	1	1	1.5	1.5	1.5	1.5	1.5	2	2	2	2

Packing

- Standard Length of 3-Meters; Customized Length can be arranged, upon request.
- Contact Sales Representative, for Customized or Larger Sizes

Product of Singapore